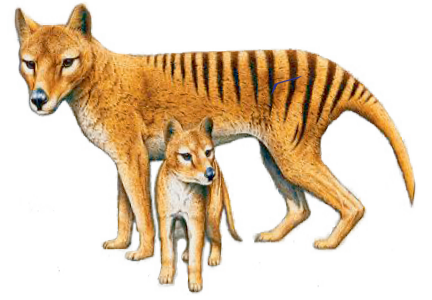
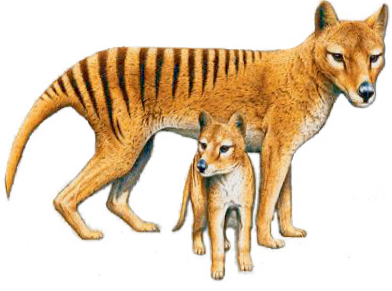
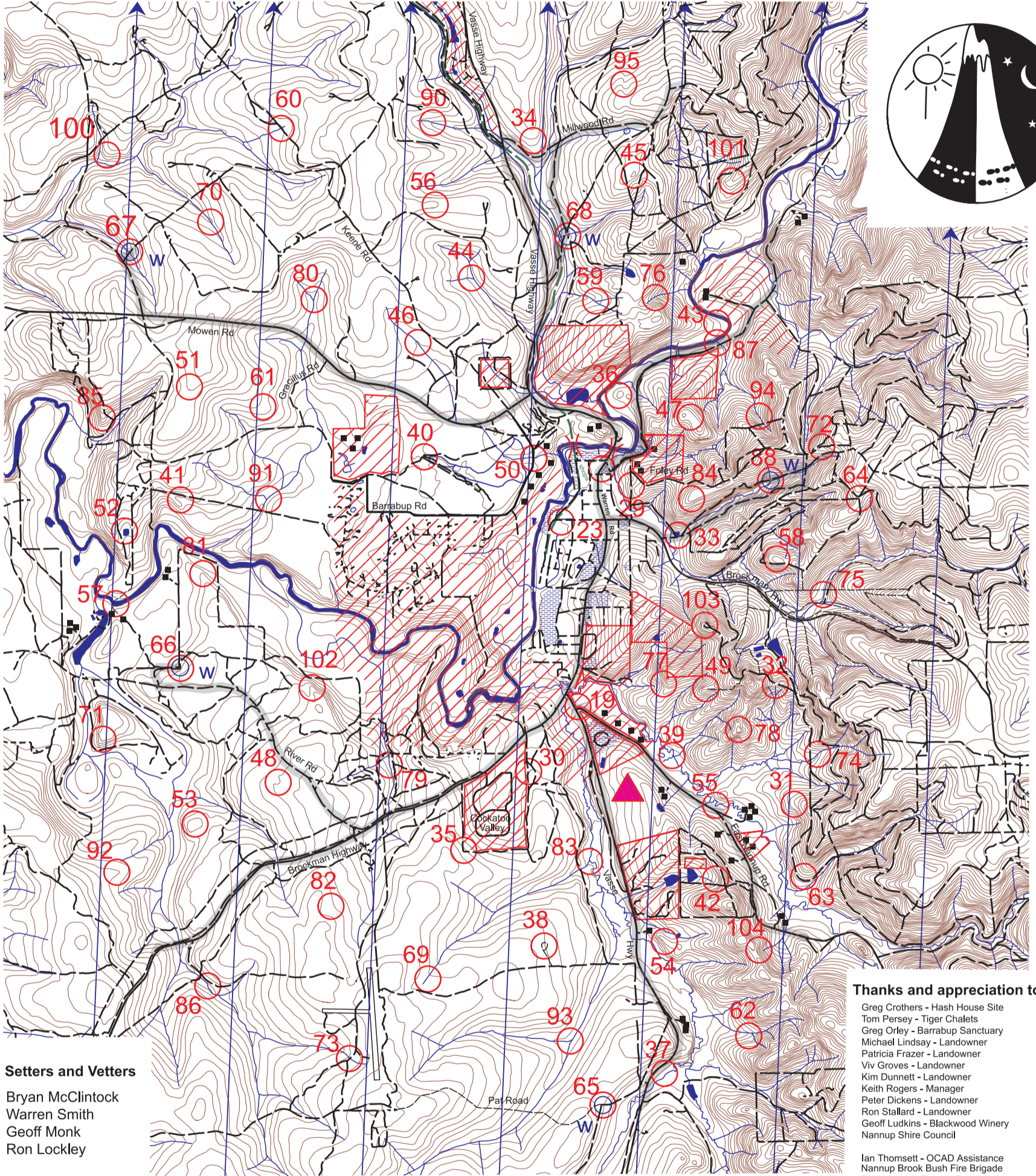


# Tiger Territory Rogaine NANNUP



October 27th 2012



**Setters and Vettors**

Bryan McClintock  
Warren Smith  
Geoff Monk  
Ron Lockley

**Thanks and appreciation to:**

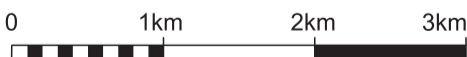
Greg Crothers - Hash House Site  
Tom Persey - Tiger Chalets  
Greg Orley - Barrabup Sanctuary  
Michael Lindsay - Landowner  
Patricia Frazer - Landowner  
Viv Groves - Landowner  
Kim Dunnett - Landowner  
Keith Rogers - Manager  
Peter Dickens - Landowner  
Ron Stallard - Landowner  
Geoff Ludkins - Blackwood Winery  
Nannup Shire Council

Ian Thomsett - OCAD Assistance  
Nannup Brook Bush Fire Brigade  
Trent Smith - Graphic Design

**LEGEND**

Buildings/Fixed Objects	■	Out of Bounds	
Continuations	→	Road bridge	
Control		Road, Sealed	
Contours		Road, Major Gravel	
Dams	■	Swamp	
Fences	—	Track	
132kV Power Line	—	Watercourse	
Hash House		Water Drop	
Magnetic North Line	↑	Water Tanks	
Munda Biddi Trail		Patrolled Roads	

SCALE 1:50,000, 5 metre contour interval



Department of Sport and Recreation



Emergency contact - Warren 0407 773 697  
Satellite Phone - +881622449700

This map was produced using OCAD 9 by the Western Australian Rogaining Association, wa.rogaine.asn.au.  
Data supplied by DOLA and used under copy licence 393/93. Possession of this map does not give right of entry to this area.

# NANNUP-TIGER TERRITORY ROGAINE - October 27th, 2012

No.	Description	Points	No.	Description	Points	
19	CA - Road Junction / A Grove of Trees	20	60	HF - Track Gully Junction	60	<b>Important Information</b>  <b>Map Collection</b> From 07:00 Saturday (7am)  <b>Punch Card Collection</b> 9.30am  <b>Briefing</b> 9:45am  <b>START</b> 10am Saturday  <b>Finish</b> 10pm Saturday  <b>Hash House Opening</b> 5pm  <b>Sunset</b> 6.38pm  <b>Moonrise</b> 4.27pm  <b>Late Penalty</b> 10 points per minute  <b>Competitor is deemed LATE 30mins after 10pm</b> <b>LATE = NO POINTS</b>  <b>Controls used</b> 81  <b>Double Point Controls</b> 0, 21, 22, 23, 24, 25, 26, 27, 28  <b>Total Points - 4660</b>
20	The Good Food Shop (Double points if you buy something)	20	61	BM - The Broad Spur	60	
21	The Grub Hub " " " "	20	62	BT - The Watercourse Junction / Pile of Logs / Nth Side	60	
22	The Lolly Shop " " " "	20	63	GA - The Spur <span style="color: red;">Remove existing plate Ron and Geoff</span>	60	
23	Blackwood Winery " " " "	20	64	AT - Track Junction 100mtrs @ 190 degrees	60	
24	A Taste of Nannup " " " "	20	65	Track Junction - (Water Drop)	60	
25	Templemore Tea House " " " "	20	66	KZ - Fence Corner / Forest Boundry (Water Drop)	60	
26	The Nannup Hotel " " " "	20	67	DJ - Track Creek Crossing - (Water Drop)	60	
27	Blackwood Café " " " "	20	68	IH - Track Creek Junction - 150 mtrs @ 74 degrees (Water Drop)	60	
28	The Bridge Café " " " "	20	69	FC - The Gully - 80mtrs n/east of gravel pit	60	
29	FE - The Spur, rocky break away	20				
			70	JJ - The Watercourse	70	
30	EL - Track Bend (large fallen tree disguises track!!)	30	71	KW - The Spur	70	
31	AY - The Spur	30	72	BA - The Spur Track Junction	70	
32	FG - Head of the Watercourse	30	73	FD - Track Creek Junction	70	
33	BE - The Dam, West Side	30	74	BY - The Watercourse	70	
34	CX - The Spur	30	75	BQ - The Creek	70	
35	LB - Cockaroo Valley Fence Corner	30	76	CC - The Creek	70	
36	CR - The Knoll	30	77	GB - Head of the Gully	70	
37	EH - Fence / Farm Corner	30	78	AQ - A Knoll	70	
38	GL - Truck Turnaround	30	79	BX The Watercourse	70	
39	GQ - Track Creek Crossing	30				
			80	KE - The Creek Junction	80	
40	ES - The Knoll - Wildflower Dve intersection 60mtrs @ 260 degrees	40	81	LI - The Spur	80	
41	EC - The Gully	40	82	FS - The Gully	80	
42	GE - The Broad Gully	40	83	EK - The Creek Junction	80	
43	LG - Bottom of the Spur	40	84	JT - The Spur	80	
44	EG - The Creek	40	85	FV - The Spur	80	
45	ED - The Knoll	40	86	FB - The Watercourse	80	
46	KA - The Watercourse	40	87	AD - The Watercourse	80	
47	IB - The Saddle / Rock Pile (no trees!)	40	88	Track Creek Crossing - (Water Drop)	80	
48	FW - The Gully	40				
49	AP - The Knoll, great views	40	90	JA - The Watercourse	90	
			91	EJ - The Creek	90	
50	FI - Road / Watercourse Junction -20mtrs @ 225 degrees	50	92	FX - The Spur	90	
51	FF - The Spur	50	93	EW - The Creek Junction	90	
52	DA - The Dam Nth Side	50	94	BS - Head of The Watercourse	90	
53	FR - The Knoll	50	95	CF - The Gully	90	
54	GT - The Knoll	50				
55	CZ - Bend in the Creek	50	100	EY - The Spur	100	
56	KI - The Spur	50	101	II - The Spur	100	
57	DH - River Crossing - Low River Only!!!	50	102	KT - The Spur	100	
58	AL - The Knoll	50	103	GD - The Knoll / The Water Tank	100	
59	DI - Head of the Watercourse	50	104	CD - The Water Course	100	
<b>Water Drops at Controls - 88 / 65 / 66 / 67 / 68</b> If you are injured in anyway, your team must stay together and make your way to a Water Drop or a Patrolled Road and you will be picked			<b>Patrolled Roads - Brockman Hwy East / Mowan Rd / Vasse Hwy Nth / Vasse Hwy South/ Milwood Rd / Brockman Hwy West /East Nannup Rd. Patrol roads are highlighted in grey on your map</b>			